

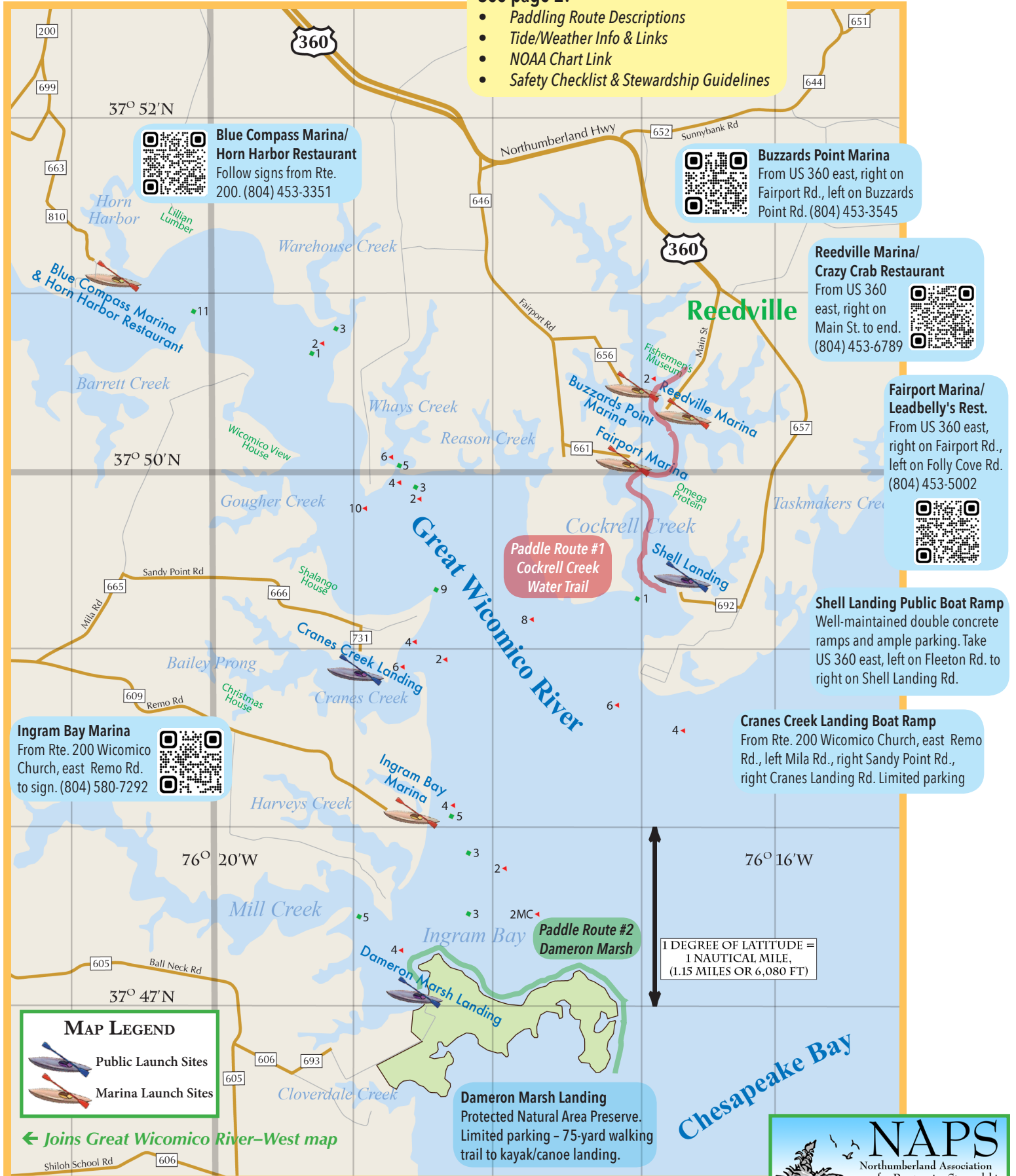


MAP: Great Wicomico River-East

NAPSva.org/GWicE

See page 2:

- Paddling Route Descriptions
- Tide/Weather Info & Links
- NOAA Chart Link
- Safety Checklist & Stewardship Guidelines





MAP: Great Wicomico River—East

NAPSva.org/GWicE

Paddling Routes

The paddling routes shown on the map are less than 4 miles roundtrip in mostly well-protected waters and can be enjoyed by paddlers of any skill level.

Paddle Route #1 Cockrell Creek Water Trail

Explore historic Reedville from the water! This working waterfront town offers several restaurants, an ice cream parlor, B&Bs, stately homes and the wonderful Reedville Fishermen's Museum. Scan QR code for detailed route maps

and a wealth of other information, courtesy northernneck.org →
Warning: Cockrell Creek is the busiest waterway in the county - please be prepared, alert, and highly visible!



Paddle Route #2 Dameron Marsh

This nature preserve is a marsh bird habitat and provides protection for the threatened northeastern beach tiger beetle. Enjoy a shoreline nature paddle when conditions are favorable, but these

are **exposed waters - limit distance according to skill level and keep an eye on weather and wind changes**. While here, enjoy the walking trails, boardwalk and viewing platform. Sections are often closed - please heed all notices. Scan for self-guided tour →



Other Paddle Routes

Take a leisurely paddle up protected Horn Harbor from Blue Compass Marina, and enjoy lunch, dinner or refreshments at Horn Harbor Restaurant (call for details). Enjoy an easy paddle around Cranes Creek from Cranes Creek Landing. From Ingram Bay, take a short tour of Harvey's Creek, or a longer paddle up beautiful Mill Creek.



← Find more Northumberland County paddling routes on our detail maps of Great Wicomico West, Little Wicomico, Yeocomico, Coan, and Indian & Dividing Creeks.

For paddling routes in other Virginia counties, visit VirginiaWaterTrails.org →



Tides:

Scan QR for tide predictions at Great Wicomico River Light (site also links to the local marine weather forecast).

Average tidal range is 14 inches but can vary widely due to frequent coastal flooding.

The marshes at the headwaters of most of the creeks are secluded and full of wildlife. They are best explored near high tide, **BUT PLAN CAREFULLY: Explore only while the tide is rising - A falling tide may leave you STRANDED!**



Wind & Weather:

Scan QR for Weather Underground's Reedville forecast and live radar. Storms can develop very quickly, especially in the afternoons during spring and summer.

Moderate winds (13-20 mph) can cause significant wave action on the Great Wicomico River, but the creeks are mostly protected and can be comfortably navigated in most conditions.



Marine Charts:

Scan QR for NOAA Chart of this segment courtesy of WaterwayGuide.com (or download the Waterway Guide® or other marine charting app for IOS or Android)



Did you know:

Northumberland County has its own volunteer sea rescue service?

For over 50 years, **Smith Point Sea Rescue** has been "there when needed" to assist or rescue boaters - **no charge!** It monitors VHF Ch. 16 or can be dispatched through the Northumberland County Sheriff's Office or 911. Scan QR to learn more or to make a donation.



Safety Checklist:

- ☐ Paddle with a buddy.
- ☐ Dress appropriately - bring rain gear or poncho.
- ☐ Wear a personal flotation device (PFD) and/or paddleboard leash.
- ☐ Carry an extra paddle, a bilge pump or bailer, and a first aid kit.
- ☐ Leave a "float plan" with a friend - let them know where you are going and when you plan to return.
- ☐ Watch for motorized watercraft and wakes. Carry a whistle and wear highly-visible clothing and hat. An orange flag mounted on a mast is recommended.
- ☐ Bring a smartphone and/or GPS receiver - keep in a sealable bag with flotation (most smartphones will function normally while inside a baggie). A VHF radio is recommended.
- ☐ Bring charts and/or guides - always know where you are.
- ☐ Bring water, snacks, insect repellent, and sunscreen.
- ☐ Be aware of tides, currents and wave action. Do not venture into the Chesapeake Bay or Potomac River unless you have the skills and preparation to navigate open, unprotected waters.

Emergency? Call 911 on mobile phone or MAYDAY on VHF-16

Stewardship Guidelines:

- Respect private property.
- "Leave no trace" - dispose of all trash properly.
- View wildlife from a distance and do not disturb nests or dens. Do not touch or feed wildlife!
- Fishing requires a fishing license and knowledge of regulations.

Please send suggestions, corrections, or new information to Stewardship@NAPSva.org. Produced and frequently updated by NAPS - an all-volunteer non-profit dedicated to preserving and improving the natural environment for the benefit of residents, businesses and visitors.
If you are enjoying these paddler's guides, please donate to NAPS - or better yet, join us! (scan QR for more info) →

